

TECHNICAL BULLETIN REMOTE CONTROL

GUIDELINES 2010 TO 2019



DC/AC POWER INVERTERS

November 2019

REMOTE CONTROL PARTS

LIST OF ALL MODELS EQUIPPED WITH A REMOTE CONTROL

2010 to 2015 (Call for earlier models)

E1500 – E2000 – E2000GF – HD1200 – HD1800 – HD1824 – HDi1800 – HDi1824 – HD2500 – HD2524
HDi3000 – HDi3024 – HTS(T)1800 – HTS1824 – HTS(T)2500 – HTS2524 – HTS(T)3000 – HTS3024

2015 +

M1500 – M2000 – M2000GF – M2500 – M2524 – M3000 – M3024 – S1800 – S2500 – S2524 – S3000 – S3024

NOTES

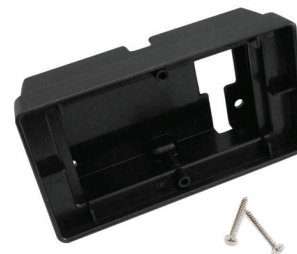
1. Tundra remote controls are "STANDARD"; Therefore not optional.
2. Remote control models are NOT interchangeable; Upgrades are impossible.
3. All models that are not listed above are NOT equipped with a remote control.

REMOTE CONTROL SHORT CORD



Model: - CRJ456
Part number: - TUN812009
Description: - 6"/Black/RJ45 connector/8 pins
Application: - RCL2 only
For models: - HD1800, HDi1800, HD1824,
HDi1824, HD2500, HD2524,
HDi3000, HDi3024, HTS(T)1800,
HTS1824, HTS(T)2500, HTS2524,
HTS(T)3000, HTS3024

REMOTE CONTROL SHORT CORD



Model: - RCLSM
Part number: - TUN812006
Description: - Surface mount kit / Black / Plastic
Application: - RCL1, RCL2 & RCL3

TECHNICAL BULLETIN REMOTE CONTROL

GUIDELINES 2010 TO 2019



DC/AC POWER INVERTERS

November 2019

EARLIER MODELS - 2010 to 2013

Notes: **Limited availability**

REMOTE CONTROL UNIT



Model: - RDI

Part number: - TUN812003

Description: - Digital Display
- With Locking ON/OFF plunger
- Metal housing / 6 Pins
- Grey connector / 6 pins

CORRESPONDING SERIAL NUMBERS

E1500	→	MR250A0001 to MR252L9999
E2000	→	MT250A0001 to MT252L9999
HD2500	→	MU250A0001 to MU252L9999
HD1200	→	MQ250A0001 to MQ252L9999
HD1800	→	MS250A0001 to MS252L9999
HDi3000	→	MV250A0001 to MU252L9999

REMOTE CONTROL CORD



Model: - CRJ11240

Part number: - TUN812007

Description: - 6 m (20') / Beige
- RJ11 connectors / 6 Pins

REMOTE CONTROL CONNECTOR



Model: - N/A

Part number: - N/A

Description: - Grey
- 6 Pins

TECHNICAL BULLETIN REMOTE CONTROL

GUIDELINES 2010 TO 2019



DC/AC POWER INVERTERS

November 2019

LATE MODELS - 2013

Notes: **Limited availability**

REMOTE CONTROL UNIT



Model: - RCL1

Part number: - TUN812004

Description: - LCD Display (First Generation)
- With Locking ON/OFF plunger
- Plastic housing / 6 pins
- Grey connector / 6 pins

CORRESPONDING SERIAL NUMBERS

E1500	→	MR253B0001 to MR253H9999
E2000	→	MT253B0001 to MT253E9999
HD2500	→	MU253B0001 to MU253F9999
HD1200	→	MQ253B0001 to MQ253B9999
HD1800	→	MS253B0001 to MS253G9999
HDI3000	→	MV253B0001 to MU253G9999

REMOTE CONTROL CORD



Model: - CRJ11240

Part number: - TUN812007

Description: - 6 m (20') / Beige
- RJ11 connectors / 6 pins

REMOTE CONTROL CONNECTOR



Model: - N/A

Part number: - N/A

Description: - Grey
- 6 pins

TECHNICAL BULLETIN REMOTE CONTROL

GUIDELINES 2010 TO 2019



DC/AC POWER INVERTERS

November 2019

LATE MODELS - 2013 to 2014

REMOTE CONTROL UNIT



Model: - RCL2

Part number: - TUN812005

Description: - LCD Display (Second Generation 2014-2015)
- With Locking ON /OFF plunger
- Plastic housing / 8 pins
- Black connector / 8 pins

CORRESPONDING SERIAL NUMBERS

E1500	→	MR253I0001 to MR2515B9999
E2000	→	MT253F0001 to MT2515B9999
HD2500	→	MU2514J0001 to MU2514L9999
HD1200	→	MQ253D0001 to MQ253F9999
HD1800	→	MS253K0001 to MS2514L9999
HDi3000	→	MV2514I0001 to MU2514L9999
HTS1800	→	HTS2500 → HTS3000
S1800	→	S2500 → S3000

REMOTE CONTROL CORD

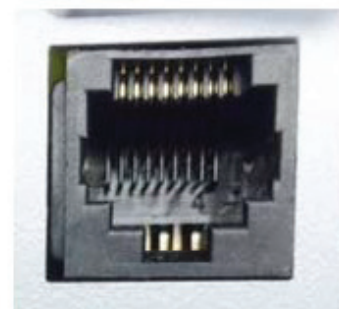


Model: - CRJ45240

Part number: - TUN812008

Description: - 6 m (20') / Black
- RJ45 connectors / 8 pins

REMOTE CONTROL CONNECTOR



Model: - N/A

Part number: - N/A

Description: - Black
- 8 pins

TECHNICAL BULLETIN REMOTE CONTROL

GUIDELINES 2010 TO 2019



DC/AC POWER INVERTERS

November 2019

LATE MODELS - 2015 & UP

Notes: M SERIES ONLY

REMOTE CONTROL UNIT



Model: - RCL3

Part number: - TUN812015

Description: - LCD Display (Thrid Generation)
- With Momentary Locking ON/OFF plunger
- Plastic housing / 8 pins
- Black connector / 8 pins

CORRESPONDING SERIAL NUMBERS

M1500	→	From MR2515C0001
M2000	→	From MT2515C0001
M2500	→	From MU2515E0001
M3000	→	From MV2515E0001

REMOTE CONTROL CORD

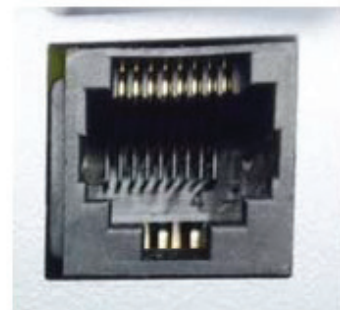


Model: - CRJ45240

Part number: - TUN812008

Description: - 6 m (20') / Black
- RJ45 connectors / 8 pins

REMOTE CONTROL CONNECTOR



Model: - N/A

Part number: - N/A

Description: - Black
- 8 pins