

**Date:** November 21, 2019

**Subject:** Battery maintenance

**Application:** All commercial trucks

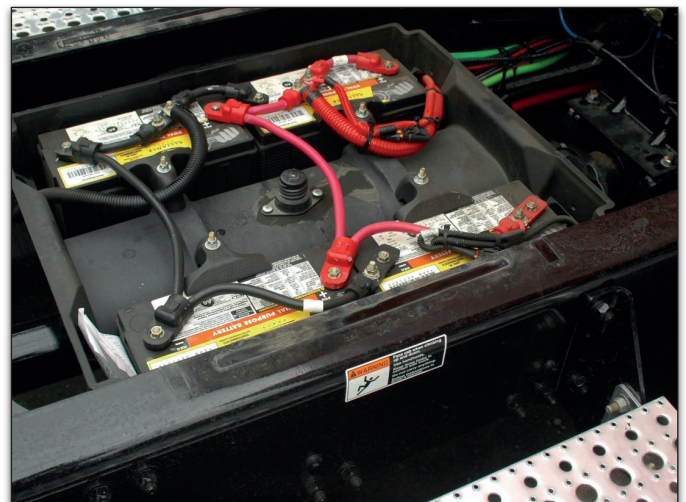
**Overview:** Battery maintenance is a key factor in the performance of commercial trucks. Better maintenance promotes better operation and lower costs.

---

## BATTERY MAINTENANCE: A key factor in trucks' performance.

When it comes to preventive maintenance, trucks' electrical systems often take a backseat to maintaining the drivetrain and other moving parts. But because batteries are now burdened with a wide array of on-board systems, performing scheduled battery maintenance at least twice a year is essential to prevent their accelerated wear and tear, and the premature failure of related components such as alternators, starters and, of course, power inverters.

Thorough biannual preventive maintenance remains the best way to dramatically prolong the service life of batteries and electrical systems, to promote easy engine start in cold weather, and to avoid power inverter problems.



Procedure on page 2 →

## CLEAN YOUR BATTERIES

➔ **Required time:** 5 minutes

**Problem:** Contaminants can create closed circuits that consume energy and drain batteries.

**Solution:** Remove grease and dirt from the batteries' top with soap and water. Use a dry cloth and moderately compressed air to dry them.

**Advantage:** Batteries will stop breaking down on their own due to unnecessary discharge cycles.

## CLEAN ALL BATTERY CABLE TERMINALS AND LARGE DC FUSE HOLDERS

➔ **Required time:** 30 to 45 minutes

**Problem:** The flow of electricity between the different materials (zinc, tin, stainless steel, lead) causes a chemical reaction that produces a contaminant resembling gum. This gum blocks the free flow of electricity and causes unwanted resistance that leads to overheating and premature failure of electrical systems.

**Solution:** Dismantle and clean all terminals, cable extremities and battery poles with a wire brush to remove the accumulated blackish gum.

**Advantage:** Electrical flow will be optimized, and maximum efficiency of starter, alternator and power inverter will be restored.



### TIP OF THE DAY

Never use grease or greasy substances on batteries or terminals. Grease is dielectric and blocks the flow of electricity. It also attracts unwanted contaminants.

If you insist on adding protection, use something that dries up completely such as battery terminal protector #278 from PLASTIKOTE. But keep in mind that this will not prevent the chemical reaction that produces the blackish gum between terminals.



**Maintaining your batteries will help keep your trucks on the road!**